

Camden Council homes

Week 31

Advert Thursday 6 August to Monday 10 August 2020

Please note these properties are not suitable to be adapted, please refer to the notes on Adaptations at the bottom of this advert.

We are advertising properties with their accessible housing categories so that you may bid on properties that are suitable for your assessed accessibility needs. Further information can be found on our Home Connections website at <https://camden.homeconnections.org.uk/>

We understand the concerns surrounding safe distancing and we along with the housing associations wanted to ensure the safety of our residents and Camden employees. You will note that during this period, some housing associations were still advertising their properties but providing virtual tours – a video clip of the interior of the property. In terms of our Camden Council homes, we will also provide virtual tours of our homes; so if you are shortlisted, you will be contacted and sent a video link of the property. If you want to actually see the property that you have placed your bid on, arrangements will be made for this to happen.

Contact Camden has reopened. However, in the best interests of maintaining safe distancing we won't be able to offer any Public Access PCs so customers will be unable to come to 5PS to bid. This matter is being considered and when the service does resume it will be limited to 3 computers only and likely to be on an appointment only basis due to social distancing requirements.

For further information on Covid-19 symptoms and how to stay safe please see www.nhs.uk/conditions/coronavirus-covid-19

London & Quadrant

1 Bed

Derby Lodge, Wicklow Street, WC1

1 bedroom flat (double) in an individual block. 5th floor with lift access and 3 external steps. Central heating. No parking. Pets not allowed (except guide and service animals).
Landlord: London & Quadrant. Council Tax Band: TBC.
Ward: King's Cross.
Rents up to: £143 pw.

Advert no. 288036



Camden General Needs Homes

Studio

Broadfield Lane, NW1

Studio flat on a large estate. 1st floor with 13 external steps. No lift. Communal central heating. **Sensitive let**
Landlord: Camden Council. Council Tax Band: B.
Ward: Canteloves
Rents up to: £102 pw.
London Accessible code: G.

Advert no. 104742



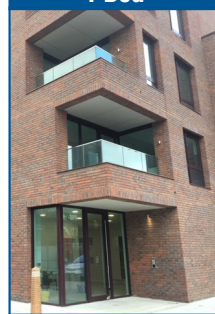
Origin Housing Association

1 Bed

Chaplin House, Torbay Lane, NW1

1 bedroom adaptable flat (double) on a new development. 1st floor with lift access. Property has an open plan living room and kitchen and is gifted with flooring and blinds. There is a level access shower, no bath. Communal heating. Shared courtyard. Balcony. Starter tenancy followed by an assured tenancy. An Affordability Assessment will be carried out prior to being offered the property and one weeks' rent is payable in advance. Permission on keeping pets should be discussed with the landlord at the viewing. There is no parking at this development and no Camden Council parking permit will be issued for tenants who might own vehicles. No right to buy. Sensitive let.
Landlord: Origin Housing Council Tax Band: TBC.
Ward: Kentish Town.
Rents up to: £195 pw.

Advert no. 288076



Studio

Faversham House, Bayham Place, NW1

Studio flat (single) in a tower block. 2nd floor with lift access. Full central heating.
Landlord: Camden Council. Council Tax Band: B.
Ward: St Pancras and Somers Town.
Rents up to: £97 pw.
London Accessible code: G.

Advert no. 101025



Studio

Walter Northcott House, Fortune Green Road, NW6

Studio flat in an individual block. 1st floor with 19 external steps. No lift access. Full central heating. Communal garden
Landlord: Camden Council. Council Tax Band: B.
Ward: Fortune Green.
Rents up to: £99 pw.
London Accessible code: G.

Advert no. 183345



Soho Housing

1 Bed

Rossetti Court, Ridgmount Place, WC1

1 bedroom flat (double) on a small estate. 2nd floor with 30 external steps. No lift access. Electric heating. Communal garden. No parking. Pets not allowed (except guide and service animals).
Landlord: Soho Housing. Council Tax Band: TBC.
Ward: Bloomsbury.
Rents up to: £152 pw.

Advert no. 288056



1 Bed

Camden High Street, NW1

1 bedroom flat (double) in a street property. 3rd floor with 52 external steps. No lift access. Full central heating.
Landlord: Camden Council. Council Tax Band: C.
Ward: Regent's Park.
Rents up to: £112 pw.
London Accessible code: G.

Advert no. 103738



Camden Council homes

Week 31

Advert Thursday 6 August to Monday 10 August 2020

Please note these properties are not suitable to be adapted, please refer to the notes on Adaptations at the bottom of this advert.

We are now advertising properties with their accessible housing categories and you will only be able to bid on properties that are suitable for your assessed accessibility needs. Further information can be found on our Home Connections website at <https://camden.homeconnections.org.uk/>

Camden General Needs Homes

1 Bed

Derby Lodge, Wicklow Street, WC1

1 bedroom flat (double) on a small estate. 4th floor with lift access. Full central heating
Landlord: Camden Council. Council Tax Band: C.
Ward: King's Cross.
Rents up to: £142 pw.
London Accessible code: E.



Advert no. 183374

1 Bed

Maiden Lane, NW1

1 bedroom flat (double) on a large estate. 2nd floor with lift access. District heating. **Sensitive Let.**
Landlord: Camden Council.
Council Tax Band: B. Ward: Cantelowes.
Rents up to: £119 pw.
London Accessible code: G.



Advert no. 104875

1 Bed

Somerton House, Duke's Road, WC1

1 bedroom flat (double) in a tower block. 7th floor with lift access. Full central heating.
Landlord: Camden Council. Council Tax Band: D.
Ward: King's Cross.
Rents up to: £121 pw.
London Accessible code: E.



Advert no. 194940

1 Bed

Waxham, Mansfield Road, NW3

1 bedroom flat (double) on a large estate. 3rd floor with lift access. Communal heating. Communal garden.
Landlord: Camden Council. Council Tax Band: B.
Ward: Gospel Oak.
Rents up to: £121 pw.
London Accessible code: F.



Advert no. 190498

2 Bed

Barnes House, Camden Road, NW1

2 bedroom flat (doubles) on a small estate. 3rd floor with 45 external steps. No lift access. Full central heating. Communal garden.
Landlord: Camden Council. Council Tax Band: D.
Ward: Camden Town and Primrose Hill.
Rents up to: £129 pw.
London Accessible code: G.



Advert no. 180506

2 Bed

Chancellors Court, Orde Hall Street, WC1

2 bedroom flat (1 double, 1 single) in a tower block. 6th floor with lift access and 7 external steps. Blow air heating.
Landlord: Camden Council. Council Tax Band: C.
Ward: Holborn and Covent Garden.
Rents up to: £161 pw.
London Accessible code: G.



Advert no. 197742

2 Bed

Oxenholme, Harrington Square, NW1

2 bedroom flat (doubles) in a tower block. 4th floor with lift access. District heating.
Landlord: Camden Council. Council Tax Band: C.
Ward: St Pancras and Somers Town.
Rents up to: £133 pw.
London Accessible code: G.



Advert no. 105665



Camden General Needs Homes

4 Bed

Garnett House, Garnett Road, NW3

4 bedroom maisonette (2 doubles, 2 singles) on a small estate. 3rd floor with 14 internal and 49 external steps. No lift access. Full central heating.
Landlord: Camden Council. Council Tax Band: E.
Ward: Gospel Oak.
Rents up to: £167 pw.
London Accessible code: G.



Advert no. 197389

APOLOGIES

Week 26 – Broadfield Lane (Advert 104742). This property has been re-advertised this week as previously it was not shown as a sensitive let. Apologies to anyone who placed a bid for it.

It is important that we have an up-to-date mobile or landline number in order to contact you to view a property. You may miss out on viewing a property if we are unable to contact you by phone to inform you of viewing dates.

Changes that may affect the help you receive towards your rent.

Some of the recent changes to benefits may affect the amount of help you get towards your housing costs.

- Department of Work and Pensions: If you are of working age and live in a council or housing association home that the Department for Works and Pensions say is larger than your household requires, any housing benefit or universal credit you claim may be reduced. The amount of the reduction depends on your eligible rent and how many spare rooms you have.
- Benefit Cap: For people of working age who claim housing benefit or universal credit there is a limit on the amount of benefit you can receive every week. This is currently £500 for families and £350 for single people, any help towards housing costs may be reduced to reflect this rule. From Autumn 2016 the benefit cap will be reduced to £442.31 a week if you are a couple or have children or £296.35 a week if you are a single person (London amounts).

Remember, if you claim Universal Credit the money you get towards your housing costs will be paid directly to you as part of your universal credit monthly payment and it will be your responsibility to pay your rent from the money you receive.

There are exemptions that may apply to you, for more information, please visit: www.camden.gov.uk/benefitchanges

Homefinder UK – allows council tenants and some housing association tenants to move from one part of the UK to another. You can also use this scheme if you are a homeless household living in temporary accommodation provided by Camden Council.

For more information visit www.homefinderuk.org

How do I apply?

If you wish to bid for a property visit <http://camden.homeconnections.org.uk/>. You can bid for as many properties as you want but we ask you only to bid for properties that you genuinely want to view. You need to be registered for housing in Camden. You can bid for a council (not housing association) property that is smaller than you need, however if this would result in serious overcrowding you will not be shortlisted. You cannot bid for a larger home than you need.

Deadline: bids must be received by midnight of the closing date.

Successful applicants: applicants with the most points will be contacted shortly after the closing date. Please make sure that we have your correct telephone number. You can contact the Accommodation Placements Team on 0207 974 6498 to update your number or to provide additional contact numbers or email addresses. If you have been shortlisted, we will contact you by telephone with a viewing date and time. You may invite one other person (but no more) to attend the viewing with you. Please do not contact us to ask if you have been shortlisted. We will contact you.

Verification: before we make an offer of housing we will check all information you have given us to make sure it is correct and that you are entitled to the points you have been awarded and the bed size need you have qualified for, this will be done following an expression of interest to accept a property after the viewing. Any offer will be subject to the outcome of the verification process.

First Choice: priority will be given to existing tenants who are under occupying their homes.

Sensitive lets: marked with an asterisk*. We may need, on occasion, to select bidders based on certain factors connected to the property, eg history of antisocial behaviour or elderly tenants residing in the block. This could mean that we may have to bypass applicants with a history of drug, alcohol or mental health problems in line with our sensitive letting policy. We may also, on occasion, obtain a police check relating to bidders for some properties advertised.

Adaptations: if you have been assessed as needing an adaptation or wheelchair-accessible property, you **must** discuss this with your occupational therapist or, if you do not have one, with the allocations occupational therapist (OT), Neil Stedman, phone **020 7974 2294** before making a bid. If you do not do this you may find that we are unable to adapt the property if it is necessary to do so. Please be aware that you will need to take up residence before assessment for adaptations can take place and it may be several months before an adult social care OT can visit you.

Ground floor and basement flats

Note 1: Priority for these flats will be given to applicants assessed as having a medical need for ground floor. After that any priority will be given to households assessed as under occupying their current Camden Council or Housing Association home.